

Cannabis Care

XXXX
Vancouver Island, BC XXX XXX
help@cannabiscare.cc
(888) 798-6710
Lic. #


Sample: 2110PURA0565.1832

Strain: Space Monkey
Batch#: ; Batch Size: 1 g
Sample Received: 10/12/2021; Report Created: 10/15/2021

Space Monkey

Plant, Flower - Cured



	12.771%	14.906%	Not Tested
	Total THC	Total Cannabinoids	
	0.176%	NT	
	Total CBD	Moisture	Foreign Matter

Cannabinoids

Complete

Analyte	LOQ	Mass	Mass
	%	%	mg/g
THCa	0.010	13.065	130.65
Δ9-THC	0.010	1.313	13.13
Δ8-THC	0.010	ND	ND
THCVa	0.010	ND	ND
THCV	0.010	ND	ND
CBDa	0.010	0.201	2.01
CBD	0.010	ND	ND
CBDVa	0.010	ND	ND
CBDV	0.010	ND	ND
CBN	0.010	ND	ND
CBGa	0.010	0.212	2.12
CBG	0.010	0.056	0.56
CBCa	0.010	0.059	0.59
CBC	0.010	ND	ND
Δ10-THC	0.010	ND	ND
Total		14.906	149.06

PURA ANALYTICAL LABS

Method: HPLC-DAD. LOQ = Limit of Quantitation; ND = Not Detectable, NR = Not Reported, NT = Not Tested. Unless otherwise stated all quality control samples performed within specifications established by the Laboratory. When reporting totals, acidic cannabinoids are multiplied by 0.877 to account for loss of mass from decarboxylation upon heating; therefore this is the POTENTIAL amount upon complete decarboxylation from smoking/ vaping.

Cannabis Care

XXXX
Vancouver Island, BC XXX XXX
help@cannabiscare.cc
(888) 798-6710
Lic. #

Sample: 2110PURA0565.1832

Strain: Space Monkey
Batch#: ; Batch Size: 1g
Sample Received: 10/12/2021; Report Created: 10/15/2021

Space Monkey

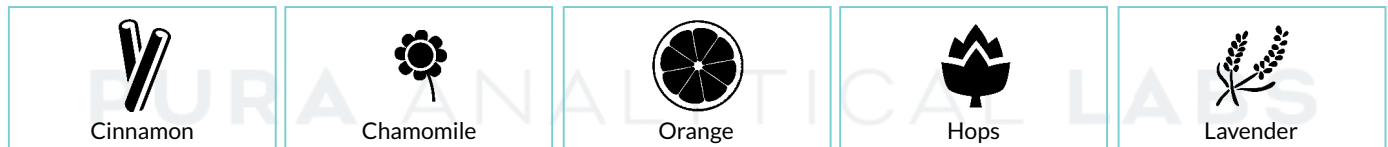
Plant, Flower - Cured



Terpenes

Analyte	LOQ	Mass	Mass		Analyte	LOQ	Mass	Mass
	%	%	mg/g			%	%	mg/g
β-Caryophyllene	0.001	0.389	3.89		Cedrol	0.001	0.004	0.04
α-Bisabolol	0.001	0.321	3.21		Eucalyptol	0.001	0.003	0.03
Limonene	0.001	0.280	2.80		Valencene	0.001	0.003	0.03
β-Myrcene	0.001	0.215	2.15		3-Carene	0.001	ND	ND
trans-Nerolidol	0.001	0.205	2.05		α-Cedrene	0.001	ND	ND
Linalool	0.001	0.143	1.43		α-Phellandrene	0.001	ND	ND
Guaiol	0.001	0.103	1.03		α-Terpinene	0.001	ND	ND
α-Humulene	0.001	0.096	0.96		Camphor	0.001	ND	ND
α-Terpineol	0.001	0.056	0.56		Fenchone	0.001	ND	ND
β-Pinene	0.001	0.044	0.44		γ-Terpinene	0.001	ND	ND
Endo-Fenchyl Alcohol	0.001	0.041	0.41		Geraniol	0.001	ND	ND
α-Pinene	0.001	0.037	0.37		Geranyl Acetate	0.001	ND	ND
Ocimene	0.001	0.028	0.28		Isoborneol	0.001	ND	ND
Farnesene	0.001	0.024	0.24		Isopulegol	0.001	ND	ND
cis-Nerolidol	0.001	0.020	0.20		Linalyl Acetate	0.001	ND	ND
Camphene	0.001	0.011	0.11		Menthol	0.001	ND	ND
Phytol	0.001	0.008	0.08		Nerol	0.001	ND	ND
Borneol	0.001	0.006	0.06		Pulegone	0.001	ND	ND
Caryophyllene Oxide	0.001	0.005	0.05		Sabinene	0.001	ND	ND
Terpinolene	0.001	0.005	0.05		Sabinene Hydrate	0.001	ND	ND
					Total		2.047	20.47

Primary Aromas



Method: GC-FID. LOQ = Limit of Quantitation; The reported result is based on a sample weight with the applicable moisture content for that sample; Unless otherwise stated all quality control samples performed within specifications established by the Laboratory. ND = Not Detectable, NR = Not Reported, NT = Not Tested